


Mouse IL-1 beta Protein, His tag (Animal-Free)

Cat #: PRP1158

Size: 5 µg/20 µg/100 µg/1 mg

Product Information

	Product Name: Mouse IL-1 beta Protein, His tag (Animal-Free)		
REF	Catalog Number: PRP1158	LOT	Lot Number: Refer to product label
	Purity: > 98 % as determined by SDS-PAGE		
	Storage: Store at -20°C		Preparation method: E.coli
	Shipping: The product is shipped at ambient temperature.		

Background: Interleukin-1 beta (IL-1 beta) is a proinflammatory cytokine expressed by monocytes, macrophages, and dendritic cells. IL-1 beta is synthesized in response to inflammatory stimuli as a 31 kDa inactive pro-form that accumulates in the cytosol. Cleavage of pro-IL-1 beta into the active 17 kDa protein requires the activation of inflammasomes, which are multi-protein complexes that respond to pathogens, stress conditions, and other danger signals. Inflammasome activation triggers the processing of the caspase-1 precursor into its active form, which in turn cleaves pro-IL-1 beta. IL-1 beta lacks a signal sequence peptide for classical ER/Golgi pathway and is secreted alongside caspase-1 via an alternate and incompletely understood mechanism.

Sequence: Amino acid sequence derived from Mouse IL-1 beta (Val117-ser 229) (P10749) was expressed with 6×His tag at the C-terminus.

Protein length: The recombinant Mouse IL-1 beta Protein consists of 113 amino acids and predicts a molecular mass of 18.3 kDa.

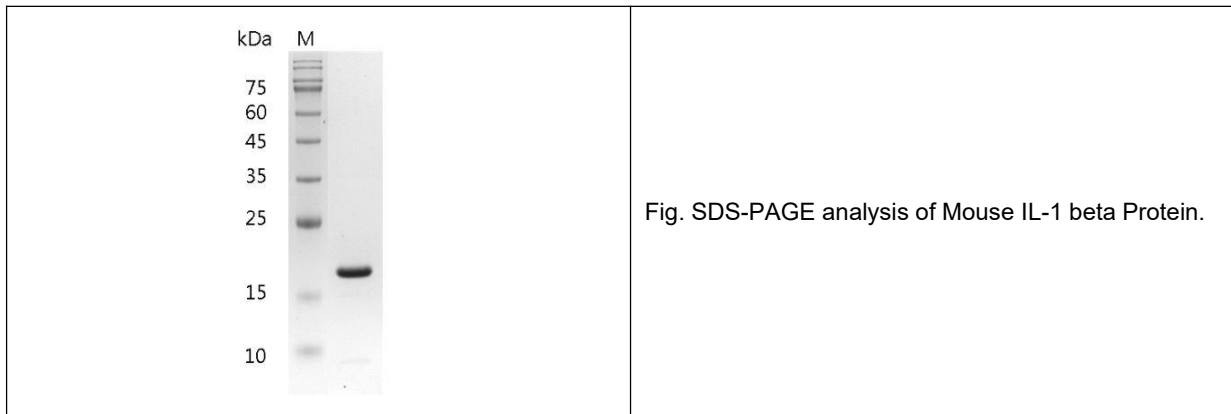
Biological Activity: Measured by its ability to induce D10.G4.1 cells proliferation. The ED₅₀ for this effect is <8 pg/mL.

Endotoxin: <0.1 EU per µg of the protein as determined by the LAL method.

Formulation: Lyophilized from sterile PBS, pH 7.4.

Storage Instructions: Lyophilized protein product should be stored desiccated below -18°C. Upon reconstitution, the protein should be stored at 4°C between 2-7 days and for future use below -18°C. For long term storage it is recommended to add a carrier protein (5% HSA, 10%FBS or 0.1%BSA). Please prevent freeze-thaw cycles.

Usage notes: Always centrifuge tubes before opening. It is recommended to reconstitute the lyophilized recombinant protein to a concentration of 0.1-1 mg/mL using the buffer we provided, and keep at room temperature for at least 20 min to fully dissolve. Please avoid vortex vigorously.



Note: The product listed herein is for research use only and is not intended for use in human or clinical diagnosis. Suggested applications of our products are not recommendations to use our products in violation of any patent or as a license. We cannot be responsible for patent infringements or other violations that may occur with the use of this product.